

# THE FAIRFAX



**ELEVATION A1**



**ELEVATION A1**  
SHOWN w. OPTIONAL SIDE LOAD



**ELEVATION D1**



**ELEVATION D1**  
SHOWN w. OPTIONAL SIDE LOAD



**ELEVATION D3**



**ELEVATION D3**  
SHOWN w. OPTIONAL SIDE LOAD

# THE FAIRFAX



**ELEVATION D2**



**ELEVATION D2**  
SHOWN w. OPTIONAL SIDE LOAD



**ELEVATION D4**

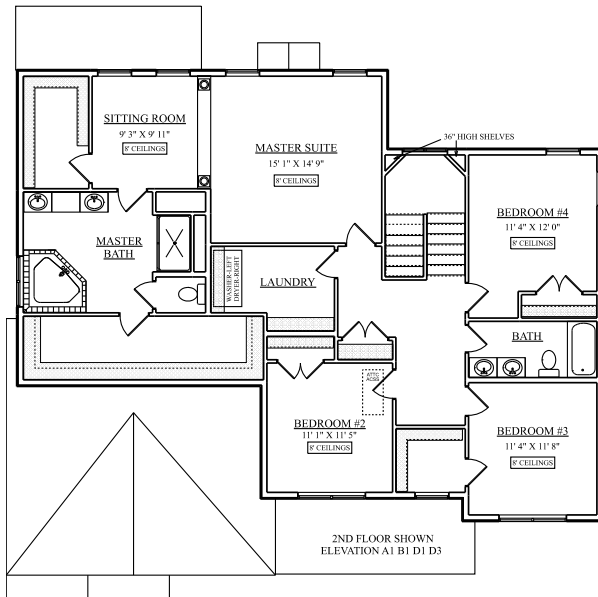
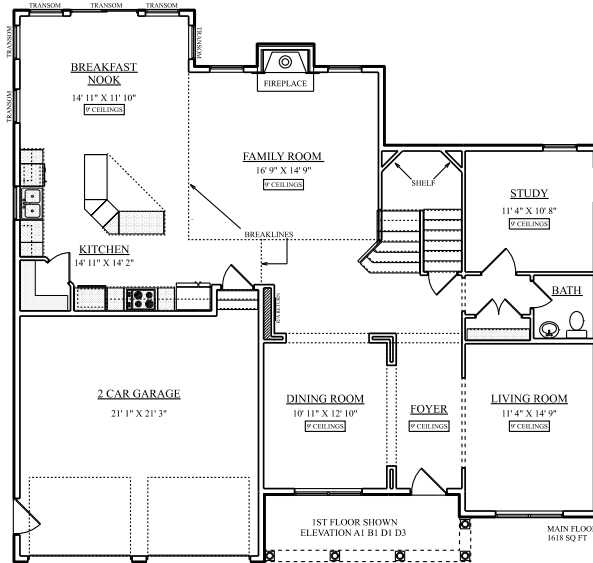


**ELEVATION D4**  
SHOWN w. OPTIONAL SIDE LOAD

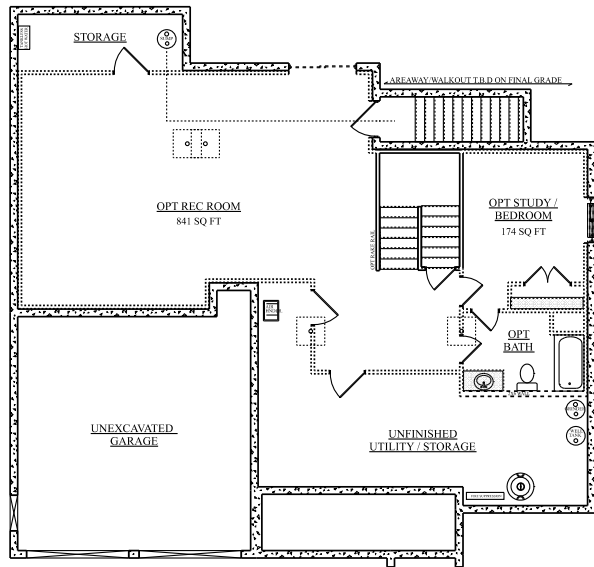


# THE FAIRFAX A1 B1 D1 D3

**MAIN LEVEL  
1598 SQ FT**



**UPPER LEVEL  
1569 SQ FT**



**LOWER LEVEL  
1616 SQ FT**

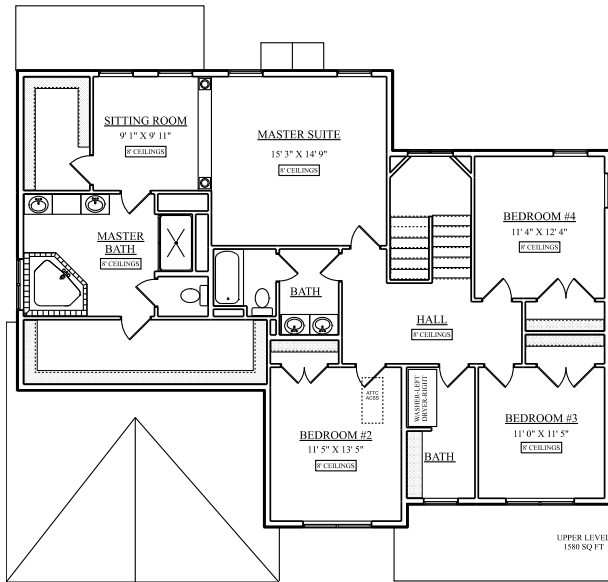
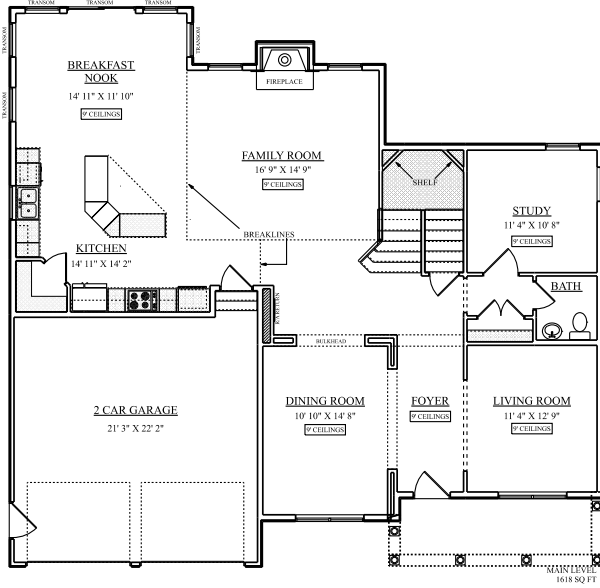


\*Renderings are for illustrative purposes only and may vary in precise detail from plans and specification as required by code. Window sizes, window locations and room sizes vary per elevation. Standard features vary per community. Floor plans may be reversed based on site plan conditions. Quality Built Homes reserves the right to change floor plans and pricing without notice. Please consult the Sales Manager for the standard floor specifications.

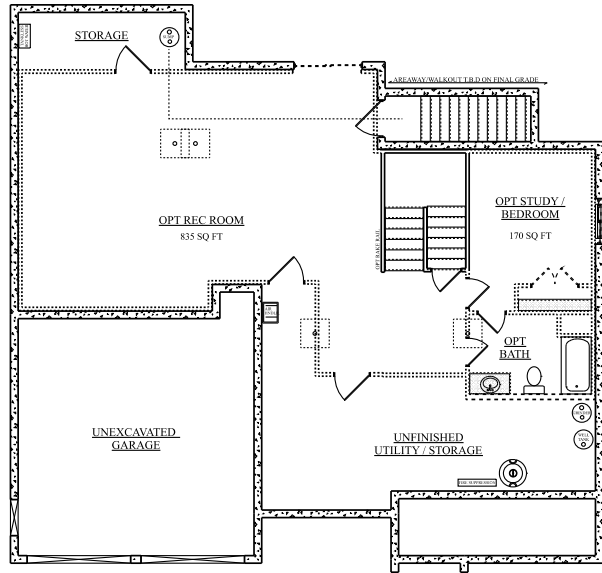
www.qbhi.com  
MHRB No. 103

# THE FAIRFAX D2 D4

**MAIN LEVEL  
1598 SQ FT**



**UPPER LEVEL  
1568 SQ FT**



**LOWER LEVEL  
1616 SQ FT**



"Renderings are for illustrative purposes only and may vary in precise detail from plans and specification as required by code. Window sizes, window locations and room sizes vary per elevation. Standard features vary per community. Floor plans may be reversed based on site plan conditions. Quality Built Homes reserves the right to change floor plans and pricing without notice. Please consult the Sales Manager for the standard floor specifications."

www.qbhi.com  
MHBR No. 103